

# Product Description Form



## Ricoh 500SE Digital Camera

Rugged, waterproof, digital camera with internal Bluetooth (B) and optional WiFi (W) capabilities. · 8.0 megapixels · 3x optical zoom · Vibration control · Large 2.5" LCD screen · 1GB SD · Data management software for generating shapefiles of geo-located images · Includes Li-ion rechargeable battery · AC/vehicle charger · One year factory hardware warranty. Optional GPS and GPS-compass modules for geo-referenced images



174253-02 500SE B camera  
174264-02 500SE W camera

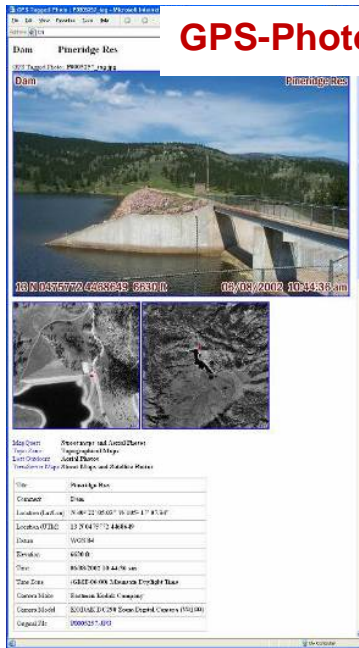


**GPS Module (SE-1)** – for geo-referenced images. Provides GPS coordinate attached to each image. SiRF III GPS receiver with accuracy of 5-10 metres & 2-5 meters with WAAS

**GPS-Compass Module (SE-3)** – provides an azimuth direction for each photo. Tri-axis compass provides 5 degree accuracy

174253-GPS 500SE B with GPS module  
174253-GPS3 500SE B with GPS-compass module  
174264-GPS 500SE W with GPS module  
174264-GPS3 500SE W with GPS-compass module

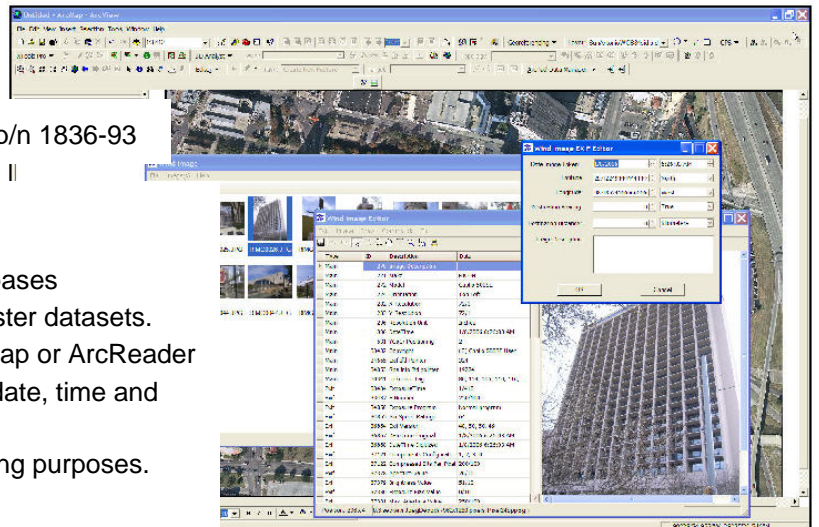
## Image Processing Software



### GPS-Photo Link Ricoh Edition v 4.2 – p/n 1836-90

Installs as a stand-alone software and as an extension to ArcGIS for full flexibility.

- Stand-alone program with outputs to Google Earth, html, shapefile etc.
- Allows for watermark labeling of GPS coordinate, date, time and memo field information.
- Web page creation automatically includes photo with watermark info shown, downloaded reference map from the internet, and a table with information about the photo.
- ArcMap plug-in for shapefile or personal geodatabase layer creation
- Thumb-nail view with mouse-over ability and hot-linked photos.



### Wind Image for ArcMap v 1.5 – p/n 1836-93

Powerful, image processing software for ArcMap.

- Create shapefile or feature class layers.
- Supports personal, file, and ArcSDE geo-databases
- Photos can be hyperlinked or as embedded raster datasets.
- Raster embedded datasets for viewing in ArcMap or ArcReader
- Allows for imprint labeling of GPS coordinate, date, time and memo field information.
- Photos can be display like labels for map printing purposes.

## Accessories



**Soft Camera Bag** – p/n 1836-62  
Padded bag with room for charger, extra battery, etc.



**Hard Camera Case** – p/n 1836-66  
Pelican 1300, rugged, waterproof, room for charger and extra battery



**2 GB SD Memory Card** – p/n 1836-70  
High Speed memory card, store 1280 full resolution images or 2560 medium



**External Antenna** – p/n 1836-30  
Plugs into the SE-1 or SE-3 GPS module for extra satellite gain, magnetic mount



**Additional Battery** – p/n 1836-53  
Rechargeable, Li-ion battery, 1900 mAh



**Additional Charger** – p/n 1836-54  
Charger for camera battery, AC and vehicle power adapters



**Extended Warranty** – p/n 1836-61  
Extends the original manufacturer's warranty for an additional year, only available at time of initial purchase, does not include GPS module, can purchase up to four warranty years.

## Advanced Options

### **FTP Server Software** – p/n 1836-87

Windows Mobile software for managing images immediately sent from camera and captured on device via WiFi, For use with the 500SE W series and software such as TerraSync or ArcPad

### **BulletProof FTP Server** – p/n 1836-89

Windows XP/Vista software for managing images immediately sent from camera and captured on a laptop or tablet computer via WiFi. For use with the 500SE W series.

### **GPS-Photo Link for ArcPad** – p/n 1845-30

Extension for ArcPad v. 7.0+  
Select any layer and field to receive the photo  
Attach multiple photos to one record  
Automatically moves photo to shapefile directory

### **Wind Image for ArcPad** – p/n 1845-50

Extension for ArcPad v 7.0+  
Photo added to any layer, new or existing  
Automatically moves photo to shapefile directory.  
Automatically renames photos as received