

CARLSON CIVIL

THE CADD SOLUTION THAT SIMPLY WORKS

Calling all

CIVIL ENGINEERS • DESIGNERS • LAND PLANNERS • DRAFTERS • SURVEYORS

Get powerful automation, plus the flexibility you need



RoadNET • SiteNET • LotNET and MUCH MORE!

Autodesk®
Authorized Developer



Authorized
IntelliCAD® Technology
Consortium Member



Carlson®

CARLSON CIVIL

Do More, Do it Better

What might take days with other civil software takes just hours, or even minutes, with the powerful, intuitive Carlson Civil

RoadNET. Build all roads, intersections and cul-de-sacs in 2D and 3D with a single click of the "PROCESS" button.

SiteNET. Elevate your estimating accuracy with this intuitive layer-based surface generator and earthwork calculator.

LotNET. Quickly define an entire subdivision of lots based on an outer boundary, interior ROWs or Centerlines, and a simple set of user-defined "rules," then pick "PROCESS" and the lots appear, defined and labeled.

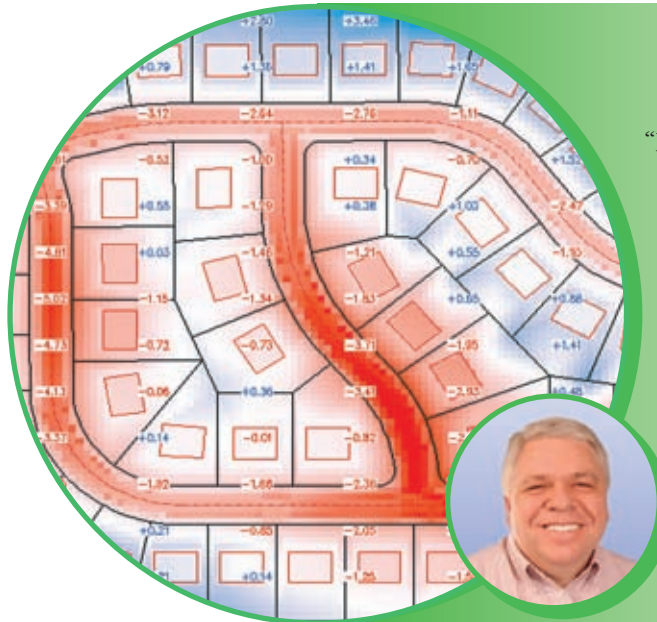
Carlson Offers Choice

- AutoCAD® or IntelliCAD® – Carlson Civil runs on top of any AutoCAD® or Map® from versions 2000 up AND Carlson Civil comes with built-in IntelliCAD®
- Automatic, Prompt or Manual – Carlson's fully dynamic design environment – its trademark "networking" – means that changes made to one aspect of your design are reflected in all other related aspects
- 2D, 3D, or Flyover – get true 2D, easy-to-use 3D, plus the ability to view an aerial image draped onto a surface in both the Carlson 3D Viewer and Surface 3D Flyover
- Affordable, Voluntary Maintenance Programs – Carlson customers are allowed to choose to upgrade based solely on the merits of the software's new features. There is no retirement of software.



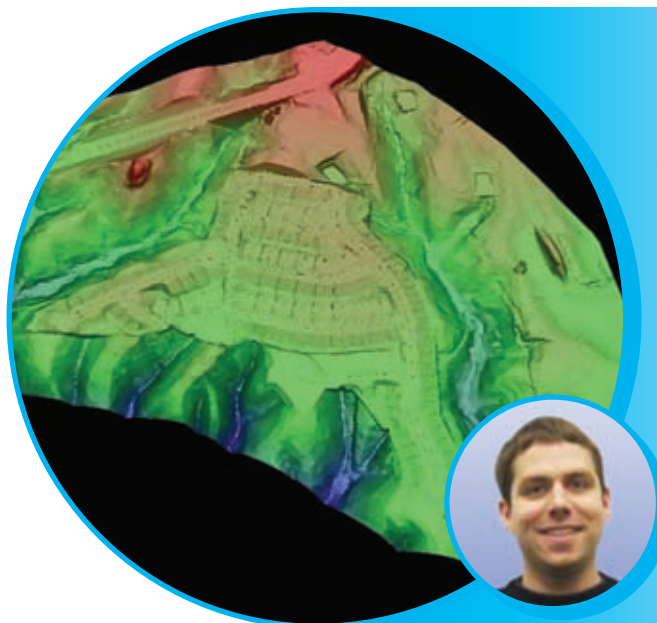
"We use everything from the Road Network to the Storm Sewer Network, plus LotNET and SiteNET. It has greatly improved our efficiency – it's just so easy to use and so productive. I would recommend Carlson Civil to anybody and have."

— J.T. Hardin
DDS Engineering
Bowling Green, Kentucky



"I especially like the RoadNET and LotNET programs – it has not only helped us to get our subdivision designs done much quicker, but also, we believe, much better. We are actually able to give the client a much better product now in much less time than before."

— Tony Kinder
Cleveland Survey
Cleveland, Tennessee



"RoadNET and SiteNET are two of my favorite aspects of Carlson Civil. They're making dinosaurs of the old ways of doing things. You can grade out a site and come up with a topographic plan in hours vs. days."

— Jason Towery
The Engineering Groupe, Inc.
Woodbridge, Virginia

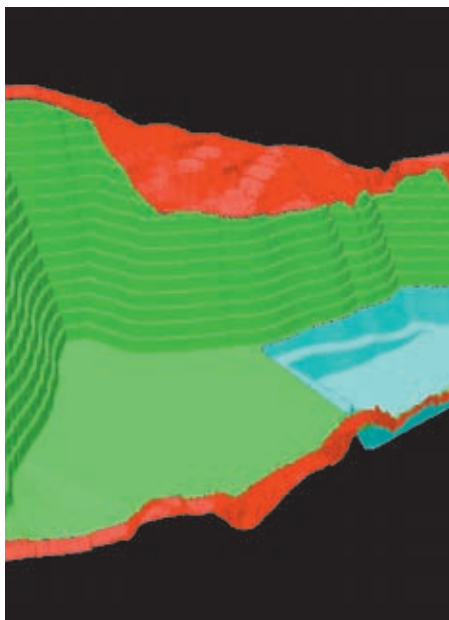
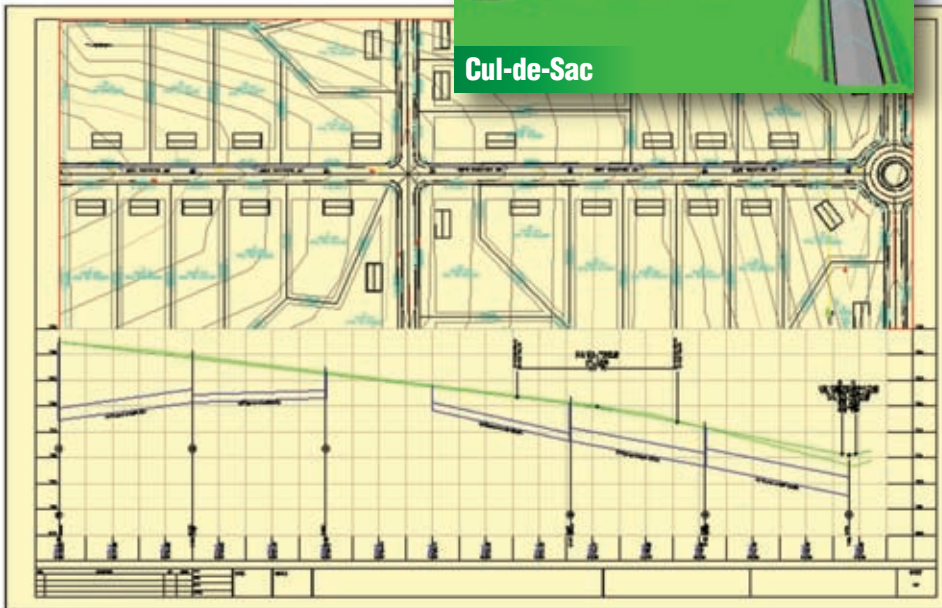
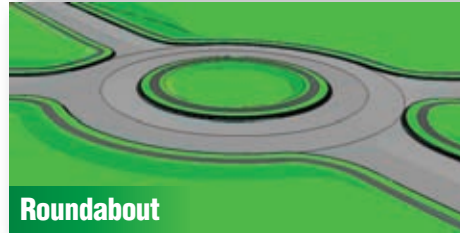
CARLSON CIVIL

Save Time, Save Your Clients Money

Get the Ability to Use Your Creativity to the Fullest

- Define your project folder to suit your organization and then personalize your drawings with your own annotation style
- Change your design and all surfaces and volumes automatically update in real time
- Explore “what if” design ideas with a simple drag and drop
- Edit with a double click and change the design in any way

RoadNET at work...



Carlson Civil At-A-Glance

General

- CAD Platforms: AutoCAD versions 2000 and up, as well as AutoCAD Map, Land Desktop and Civil3D, and IntelliCAD 6.4
- Project Setup: flexible data and settings storage
- Drafting Enhancements: Handy tools for working in AutoCAD/IntelliCAD
- Data Compatibility: Supports industry standard LandXML plus specific data conversions

3D Data

- Elevate 2D to 3D: For spot elevation, polylines, contours and pads
- Edit-Assign Polyline Elevations: Elevates 3D polylines using control points
- 3D Polyline Tools: Draw, offset, fillet and merge 3D polylines

Surfaces

- Build Surfaces: By triangulation or rectangular grids
- Contouring: One step from 3D entities or from surface files
- Triangulation Utilities: TIN math and offset, simplify and merge functions
- Surface Manager: Change surface properties and data
- 3D Surface Flyover: 3D viewer with vehicle to drive over surface or follow 3D path
- Slope Analysis: Slope reports and zone analysis

Grading

- Volumes: Earthwork volumes between triangulation or grid surfaces
- Pad Design: Tie cut/fill slopes from pad perimeters
- Cut/Fill Color Maps and Labels: Draw shaded red/blue map with labels
- SiteNET: Organize surfaces by layer with subgrade adjustments

Centerlines

- Design Centerlines: Input alignments on screen or in dialog with graphics
- Label Stations and Offsets: Annotate along centerline at selected points
- Calculate Offsets: Reports stations and offsets for selected points along centerline
- Offset Points: Create points at specified stations and offsets
- Spirals: Flexible handling of most complex spiral curves

Profiles

- Create Profiles: From surfaces, screen entities, points on centerline, etc.
- Quick Profile: One step profile creation with real-time updates
- Input-Edit Profiles: Enter profile data in dual spreadsheet and graphics
- Draw Profiles: Draws profiles on grids or plan-profile sheets
- Profiles To 3D: Create points and 3D polylines from profiles

Sections

- Create Sections: From surfaces, screen entities, points, etc.
- Quick Sections: One step creation of sections
- Draw Sections: In vertical stack or sheets
- Input-Edit Sections: Enter section data in dual spreadsheet and graphics
- Sections to 3D: Create points and 3D polylines from sections
- Mass Haul: Diagrams and Analysis
- Section Volumes: By end areas method

Road Design

- Template Design: Detailed yet simple template design
- Template Transitions: Define transitions for templates and superelevation
- Road Network: Dynamic road design with intersections and cul-de-sacs

Points

- Draw Points: Draw points with settings for symbols, layers and styles
- Point Groups: Point group manager to define sets of point by filters
- Coordinate File History: Tracks all changes to points with report and undo functions
- Fix Point Label Overlaps: Finds point label overlaps with rules to fix automatically
- Point Tools: Utilities for modify point labels such as move with leader, twist and resize

Area/Layout

- Label Areas: Customized area label styles
- Size Areas: Sliding side, hinged and radial from curve
- Lot Manager: Definitions by point numbers
- Lot Network: Size lots along alignment
- Parking, Intersections and Cul-de-Sacs: Layout for linework

Annotation

- Angle & Distance Labels: Flexible routines to label linework
- Curve Labels: Label curve data in stack, along arc or in table
- Mapping Labels: Routines to create typical plat labels
- Linetypes: Draw special linetypes

Companion Products

For surveying, engineering, mining, or construction, Carlson Software is the one place to find the complete software solution for the entire lifecycle of your projects.

Carlson SurvCE

Gives advanced, yet easy-to-use functionality, making Carlson SurvCE the first choice in data collection software. Supports the widest range of RTK GPS and conventional/robotic total stations.



Carlson Survey

An incredibly productive and intuitive survey solution with all versions complete with SurvNET Network Least Squares and drivers to connect to essentially every manufacturers' proprietary hardware and software.



Carlson Hydrology

Full 3D site, road and lot design feeds directly into flow calculations and drainage design. Carlson's HydroNET gives you the automation and precision you need. Available with HydroCAD.



Carlson GIS

This all-purpose, easy-to-use tool for the surveyor or engineer allows for enhanced data capture and linking, data labeling, import/export of SHP files, polygon topology creation and analysis, and more.



Carlson Takeoff

Provides fast and accurate CAD-based project estimating and, once you get the job, helps save both time and money by minimizing staking and gives you easy-to-use evaluation tools for quantity and quality control.



Carlson Geology

Manage drillhole data of strata and attributes, plus calculate strata models, quantities and qualities with this complete geologic modeling program. Draw isopach maps, geologic columns, fence and block diagrams. Apply block models for detailed grade analysis.



Carlson Natural Regrade

Use to apply fluvial geomorphic principles to create a landscape design that mimics the functions of the natural landscape that would naturally evolve over time. Your result: a stable hydrologic equilibrium ... naturally.



Carlson Software

Carlson Software develops software solutions that bring the land development professional from concept to completion – the full cycle of a project.

An independent company founded by Bruce Carlson in 1983, Carlson Software is well known for its comprehensive civil engineering, land surveying, machine control and positioning, and mining software solutions. Its renowned unlimited, free technical support and dedication to customer service is unique in the industry.

Find out more now, call or visit:
800-989-5028 • 606-564-5028
www.carlsonsw.com

Get FREE Technical Support

Get support from Carlson via phone, email, discussion groups and webcasts. There is no product retirement. Carlson Software supports all versions of all its products.

Sign Up For World-Class Training

Software is an investment and you can learn how to best put it to work for you at Carlson College. Attendees get personal one-on-one attention – it's a hands-on learning experience. Email training@carlsonsw.com.

CARLSON CIVIL SYSTEM REQUIREMENTS

- Microsoft Windows 2000, XP or Vista.
- Processor: Intel Pentium-based (minimum) or greater (recommended).
- Memory: 512 MB RAM
- Disk Space: 350 MB of free hard-disk space for installation

Autodesk®
Authorized Developer



Authorized
IntelliCAD® Technology
Consortium Member



Carlson®